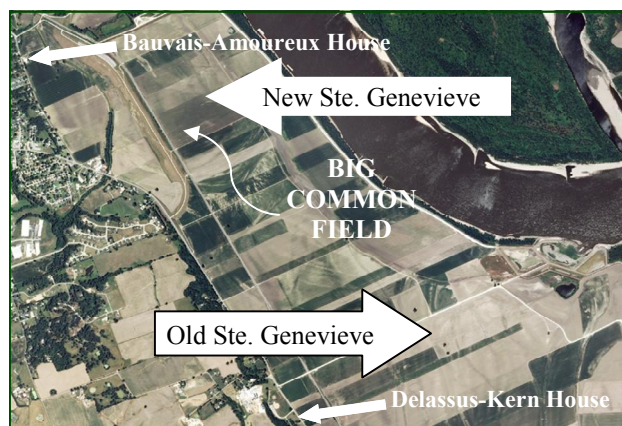


## National Park Service Site Proposed for Ste. Genevieve

The long-awaited National Park Service study of a possible national historic site in Ste. Genevieve was released for public comment on August 7. The study recommends an NPS presence in Ste. Genevieve either as an independent unit or as a small NPS core unit operated in affiliation with other significant properties owned by various organizations, including Missouri State Parks, the Foundation for Restoration of Ste. Genevieve, and the National Society of Colonial Dames in Missouri. The study did not recommend any "no action" alternatives.

Under either proposal, several state-owned properties currently part of the Felix Valle House State Historic Site would be transferred to the NPS, which would establish a core unit on St. Mary's Road centered on the 1792 Bauvais-Amoureux House, with the state's larger, more modern Creole House to the rear likely serving as a visitor center and office. From private owners, the NPS would seek to acquire the nearby 1808 Bequette-Ribault House and the 1807 Lasource-Durand House. Another state property, the Delassus-Kern House about two miles south of town, would be a non-contiguous element of the NPS unit.

All the historic buildings are of French Colonial vertical-log construction, including two—the Bauvais and Bequette—of the only three remaining post-in-ground



structures, a building style that predominated in the 18<sup>th</sup> century in the old town along the banks of the Mississippi River, and all front on the highly significant cultural landscape of the Big Common Field, which would remain in agricultural production as it has been since about 1750. Missouri State Parks would retain the 1818 Anglo-American Felix Valle and Bossier-Shaw Houses in the center of town that represent the Anglo-French transition in the early 19<sup>th</sup> century.

The recommended involvement of the NPS is good news, though tinged with sadness as well as pride as the state prepares to give up its only vertical-log structures. The NPS focus on the common field is much in keeping with a series of MPA resolutions since 1989 calling for greater local, state, and national attention to preservation of the old town site, the common field, and the buildings that front on it (see

*Heritage*, December 2012). The NPS study acknowledges the national significance of these cultural resources, but falls short of recommending acquisition of the Old Town Archaeological Site—the only remaining portion of the three-mile-long town occupied from about 1750 to the 1790s. The site could best be preserved in public ownership, operated and interpreted by the NPS in conjunction with the nearby Delassus-Kern House.

Public comments on the study are due by September 25. MPA will recommend adoption of the NPS/Affiliates option, but ask that the proposed NPS unit include the Old Town Archaeological site as well. For more background on MPA's concerns, see MPA website: <http://parks.missouri.org/IssuesAction/SteGenevieve.aspx>. Following review of comments, NPS will select one of the alternatives and submit its report to Congress. Sen. Roy Blunt is reportedly planning to file legislation proposing an NPS site in Ste. Genevieve.

### What You Can Do

All MPA members are encouraged to submit their own personal comments. **The study may be reviewed and comments submitted electronically by September 25 from links on the NPS website: <http://parkplanning.nps.gov/stegenevieve>.** Mailed comments must be received by September 25 at Sharon Miles, Project Manager, National Park Service, 12795 W. Alameda Parkway, Denver, CO 80228.

*President's Message by Steve Nagle:*

## Tour of the New State Park at Former Camp Zoe

The new park development at Camp Zoe has been featured in the news around the state this summer amidst both controversy and praise. Park officials hosted legislative and media tours of the park-in-progress to answer questions and convey their vision for the park. On September 4, State Park Director Bill Bryan led a tour of the park for leaders of park support groups, which I attended.

The vision for the park, as Bryan explained, is to act as a gateway to the nearby Ozark rivers, forests, and parks, including the adjacent Current River State Park (CRSP). After reviewing the development plans, it was immediately obvious that the new park will become a major destination facility and an economic engine for Shannon County.

The state acquired the initial 330-acre tract of the former Camp Zoe along crystal-clear Sinking Creek for \$640,000 at auction. The park is bordered on three sides by the Roger Pryor Pioneer Backcountry, a sustainably managed working forest owned by the L-A-D Foundation with some fifty miles of primitive hiking trails leased to the park system, and on the west by the Ozark National Scenic Riverways and CRSP.

Bill Bryan showed us most of the amenities under construction for the park:

- A large lodge fronting on Echo Bluff overhanging Sinking Creek, with rooms for up to 78 guests plus indoor & outdoor dining, meeting rooms, and event spaces.
- Nine cabins several stories tall accommodating up to 108 guests.
- 62 full service campsites for big camper vehicles
- Four acres of primitive and group camping with a fire ring and restroom.
- A bluff-top event shelter for 200 people.
- Amphitheater with a 50-person capacity.
- Miles of hiking trails connecting to CRSP, ONSR, and the Backcountry.

Bryan also emphasized the use of native wood and stone in buildings, landscaping with native species, and Best Management Practices for wastewater and storm water to protect Sinking Creek and Current River. In turn, the group urged planting of native trees and groundcover in the campground, where apparently no

trees were planned, and elsewhere.

All eyes were on Sinking Creek as we crossed it several times during the tour (a week since the last rain), and we were pleased to see it running clear in the midst of all the construction activity. There was some concern about the intensity and scale of development in the small valley, including the amount of land clearance and grading, the extent of concrete surface for roads, parking, and footings, and the size and placement of buildings. In the long history of our Missouri



state parks, we may want to reflect upon the fact that at one time every park was new, but time tends to soften the sharp edges.

The cost of the total project is estimated at \$52 million using existing state park funds. In addition, the Shannon County Commission received a \$10 million block grant to offset costs for roadwork. Clearly this park will be higher end than other Missouri state parks.

The old Camp Zoe will be changed forever, though its lodge and stable buildings will be retained (for uses as yet undetermined), and alumni have formed a "Friends of Camp Zoe" to celebrate the Camp's heritage.

With the park scheduled for completion next July, Bill Bryan suggested that this would make a great place for our 2016 or 2017 MPA annual gathering, and I look forward for us all to be there. Thanks to Bill and all the staff who were so gracious in organizing the tour and giving us the opportunity to see first-hand this new park in the throes of development.

## MPA 33rd Annual Gathering at Bennett Spring, October 16-18, 2015

Stay at the park motel, a cabin, or camp at Bennett Spring State Park with meals at the dining lodge and meetings at the church across the way. Enjoy a glade hike and boat tour at Ha Ha Tonka on Friday, a visit to the south side of Lake of the Ozarks State Park Saturday afternoon, and of course our host park, Bennett Spring.

Book your motel room or cabin at Bennett Spring ASAP, as Bennett is popular in the fall. **Call concessionaires Jim and Carmen Rogers (417-532-4307), telling them you are with MPA.** Campsites may be reserved on-line:

[www.mostateparks.com](http://www.mostateparks.com).

### Friday, October 16

- 12:45pm.** Gather at lodge at Bennett for 1pm travel by vans to Ha Ha Tonka for a glade hike and a boat tour  
**6:00pm** Registration and happy hour with heavy appetizers in dining lodge meeting room. Supper on your own at the lodge if desired.  
**7:00pm** Program in dining lodge meeting room with Patrick Overton, MPA's first Poet in the Parks, and a report on the fully revised park book forthcoming this fall

### Saturday, October 17

- 7:00am** Breakfast on your own at dining lodge (with \$3 discount coupon for MPA registrants)  
**8:00am** Registration in church meeting room (next door to the dining lodge)  
**8:45am** Welcome to the park in church meeting room: MPA Pres. Steve Nagle and J.D. Muschany, park manager  
**9:00am** State of the Parks Address and discussion: Bill Bryan, Director of State Parks; Report on National Park Service areas in Missouri: ONSR Superintendent Randy Johnson (invited)  
**10:30am** Panel on parks and soils sales tax renewal and infrastructure funding: Brandon Butler, Steve Mahfood, Ginger Steinmetz, and others  
**12:00n** Lunch at the dining lodge  
**1:00pm** Depart in vans for tour of south side of Lake of the Ozarks State Park: McCubbins Point, Ft. Leonard Wood Recreation Area, and Coakley Hollow Fen Natural Area  
**6:30pm** Happy hour in dining lodge meeting room, followed by dinner and program: Sen. Mike Parson and DNR director Sarah Parker Pauley

### Sunday, October 18

- 7:00am** Breakfast on your own at dining lodge (with \$3 discount coupon for MPA registrants)  
**8:30am** Annual meeting of members: dining lodge meeting room (includes UPOP)  
**9:30am** Meeting of MPA board of directors, dining lodge meeting room (all are welcome to attend)  
**12:00n** Adjourn

---

### Registration

(Flat rates with event counts for planning)

Name(s) \_\_\_\_\_

Address \_\_\_\_\_

Phone \_\_\_\_\_ Email \_\_\_\_\_

Registration (tours, meals, etc.) \_\_\_\_\_ persons @ \$50 \$\_\_\_\_\_

Registration Children (to age 10) \_\_\_\_\_ persons @ \$25 \$\_\_\_\_\_

Registration (after October 7) \_\_\_\_\_ persons @ \$60 \$\_\_\_\_\_

Ha Ha Tonka Tour Friday \_\_\_\_\_ persons

Happy Hour Friday \_\_\_\_\_ persons

Lunch Saturday \_\_\_\_\_ persons

L Ozarks SP tour Saturday \_\_\_\_\_ persons

Dinner Saturday \_\_\_\_\_ persons

Total \$\_\_\_\_\_

Make check payable to **Missouri Parks Association** and mail with form **postmarked by October 7** to Marian Fleischmann, MPA Manager, 32875 Mount Hope Rd., California MO 65018. Registration is also available on-line at MPA website: <http://parks.missouri.org>. For questions email Marian: [mpa.manager1@gmail.com](mailto:mpa.manager1@gmail.com).





Post Office Box 30036  
Columbia, MO 65205

September 2015

NON PROFIT ORG.  
U.S. POSTAGE  
**PAID**  
COLUMBIA, MO  
PERMIT #338

Return Service Requested

*NPS Site Proposed for Ste. Genevieve  
Meet with MPA Oct. 16-18 at Bennett Spring*

<http://parks.missouri.org>

## Park Briefs

### **Missouri State Parks and Historic Sites: Exploring**

**Our Legacy**, the new edition of Missouri's acclaimed state park book, is available for advance purchase on the MPA website ([parks.missouri.org](http://parks.missouri.org)) at a discount to MPA members. First published in 1992, the new edition is fully revised, including essays on eleven new parks, and contains more than 500 images, nearly 90 percent of them new. It will be available later this fall.

### **Ha Ha Tonka State Park**

was ranked fourth in the nation in a "Ten Best State Parks" competition run by USA TODAY, as determined by a popular vote among twenty initial nominees selected by a panel of experts on American travel and state parks.

### **Trails and more trails:**

**Best Media Award.** Missouri State Parks was honored with the Best Media Award at the American Trails International Trail Symposium in May for their work in promoting their 2013 Best Trail State Award and the Governor's 100-mile Challenge project. For an on-line guide to

Missouri trails, visit the Missouri Trail Alliance's new website, [www.visitmissouritrails.com](http://www.visitmissouritrails.com), a guide to thousands of miles of hiking, bicycling, equestrian, and water trails searchable by zip code, city, or county.

### **MPA resolution on Eleven**

**Point River.** Having become aware that negotiations are underway that could result in resource damages funds for acquisition of a new state park within the lower 8.7 miles of the Eleven Point National Scenic River, MPA has reiterated its concern about maintaining the undeveloped integrity of that stretch of river corridor.

The Eleven Point between Highway 160 at Riverton and Highway 142 near the Arkansas line is the longest remaining stretch of Ozark river in Missouri protected from motorized vehicular intrusion along its banks, as a result of easements acquired by the US Forest Service after the river was established by Congress as an original component of the National Wild and Scenic Rivers Act of 1968.

A resolution urging strict adherence to easement provisions was

approved by the MPA board of directors August 28 and directed to Missouri State Parks and the trustees of natural resource damages funds in the Southeast Missouri Lead Mining District: the Missouri Department of Natural Resources, the US Forest Service, and the US Fish and Wildlife Service. The funds are intended for acquisition and restoration of high quality habitat to mitigate for resources damaged by mining and milling activities. MPA is mindful of the political pressures that may ensue for greater vehicular access to that unique stretch of Ozark river.

Public comments on proposed natural resource restoration projects are being accepted through October 5, 2015. For more information and to comment, see: <http://dnr.mo.gov/env/hwp/sfund/nrda.htm>.

### **National Gold Medal Awards Finalist.**

Missouri State Parks has again been named one of four state park system finalists for the National Gold Medal Award, which will be announced at the National Recreation and Park Association Conference in September.